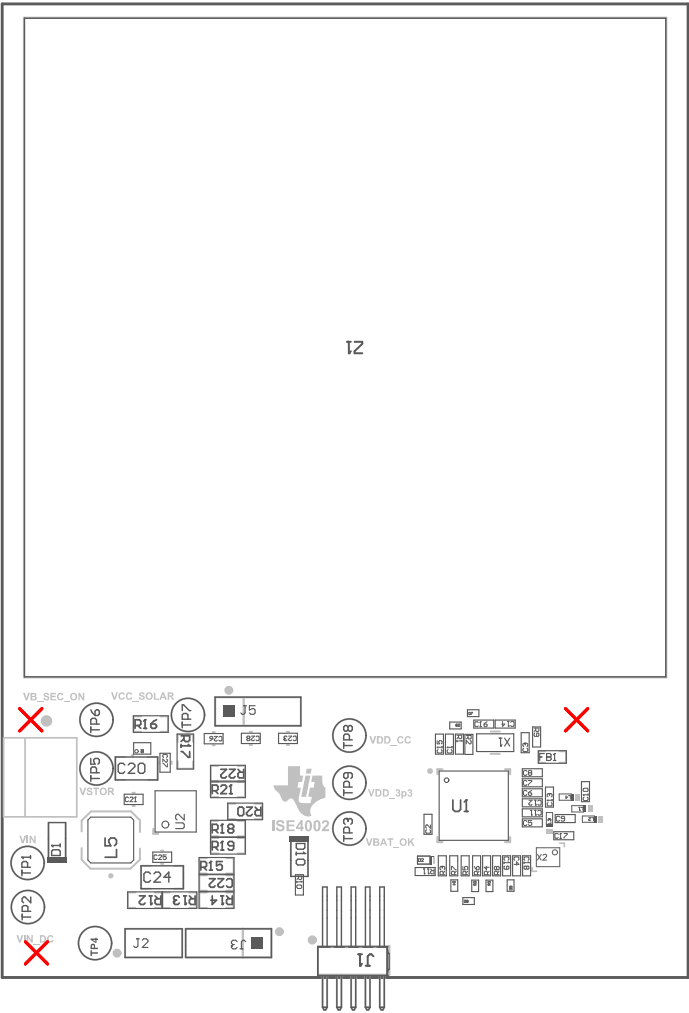
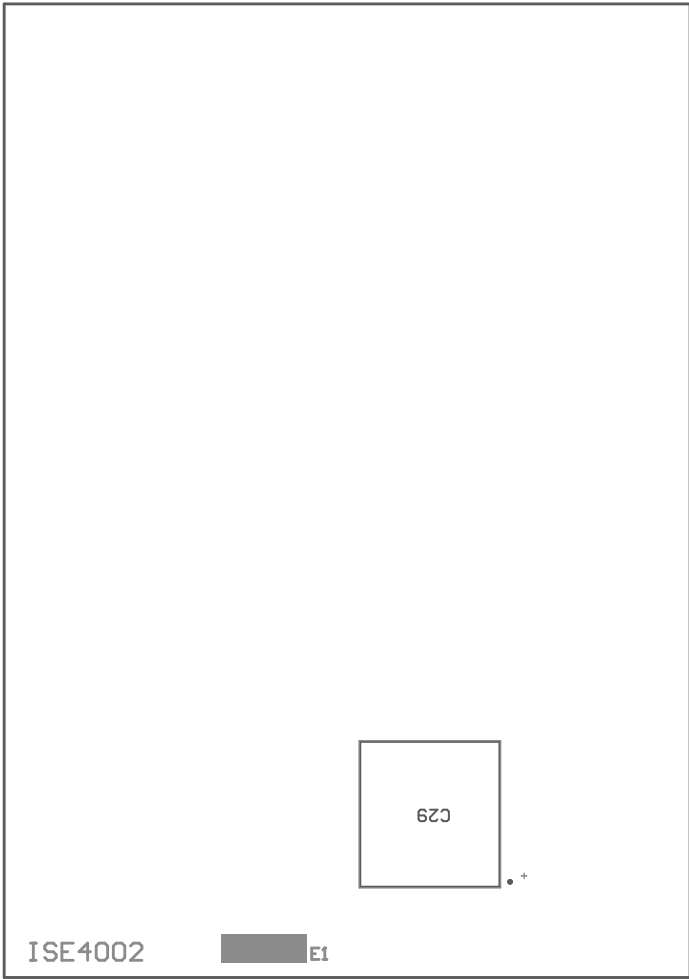


- Z22 ■ These assemblies are ESD sensitive, ESD precautions shall be observed.
- Z23 ■ These assemblies must be clean and free from flux and all contaminants. Use of no clean flux is not acceptable.
- Z24 ■ These assemblies must comply with workmanship standards IPC-A-610 Class 2, unless otherwise specified.
- Z21 ■ Install label in silkscreened box after final wash. Text shall be 8 pt font. Text shall be per the Label Table in the PDF schematic.



COMPONENTS MARKED 'DNP' SHOULD NOT BE POPULATED.  
ASSEMBLY VARIANT: 001

|                                  |                                  |                   |                                |
|----------------------------------|----------------------------------|-------------------|--------------------------------|
| PCB VIEWED FROM TOP SIDE         | BOARD #: ISE4002                 | REV: E1           | SUN REV: Not In VersionControl |
| IGNORE -> Top Overlay            |                                  |                   |                                |
| PLOT NAME = Top Assembly Drawing | GENERATED : 3/12/2014 9:58:26 AM | TEXAS INSTRUMENTS |                                |



COMPONENTS MARKED 'DNP' SHOULD NOT BE POPULATED.  
ASSEMBLY VARIANT: 001

|                                     |                                  |         |                                |
|-------------------------------------|----------------------------------|---------|--------------------------------|
| PCB VIEWED FROM BOTTOM SIDE         | BOARD #: ISE4002                 | REV: E1 | SVN REV: Not In VersionControl |
|                                     | IGNORE -> Bottom Overlay         |         |                                |
| PLOT NAME = Bottom Assembly Drawing | GENERATED : 3/12/2014 9:58:26 AM |         | TEXAS INSTRUMENTS              |